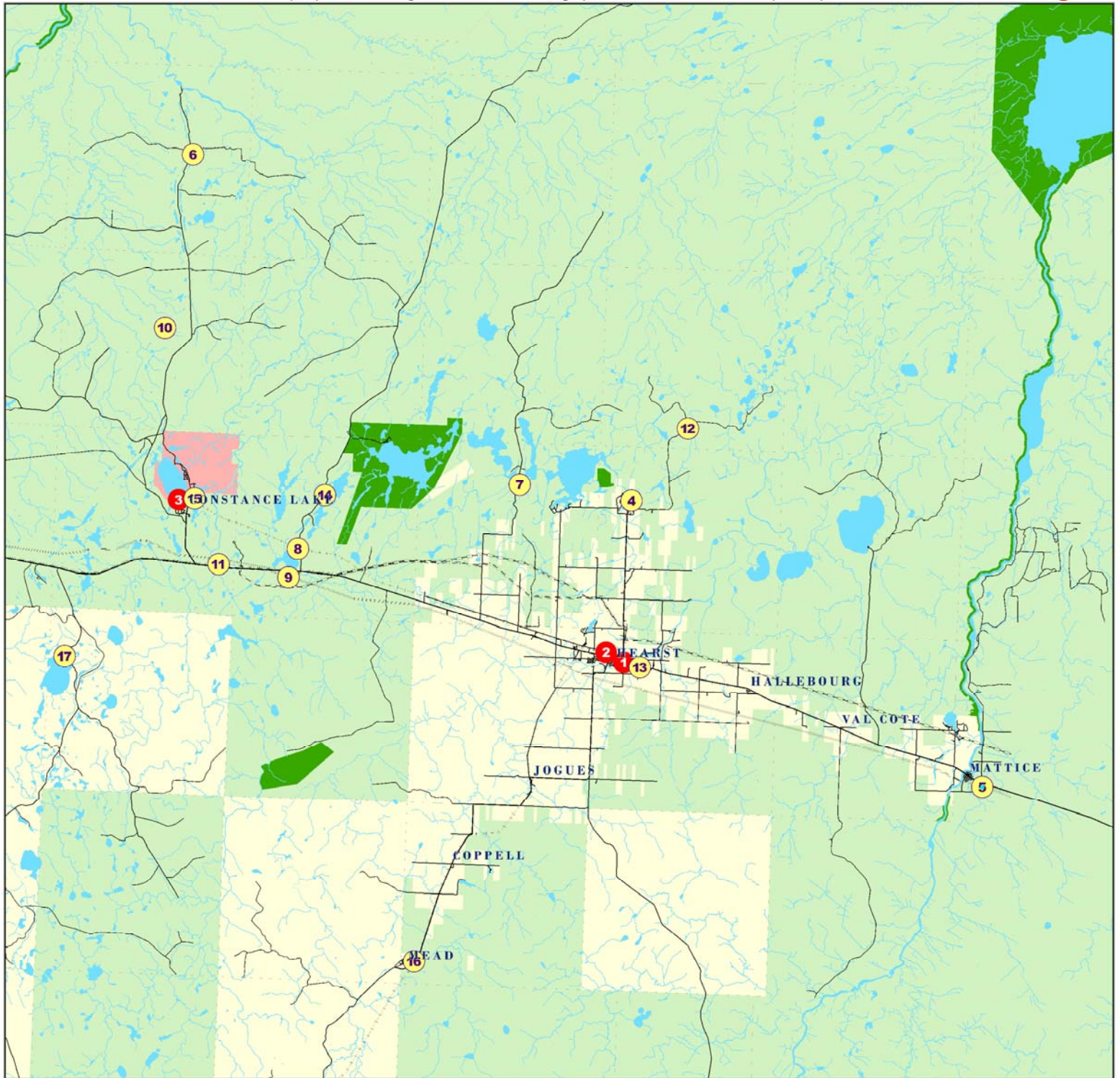


CARTE DE RÉFÉRENCES DES EMPLACEMENTS DES MOULINS À SCIE

(Cliquer sur les régions entourées de rouge pour visualiser leur carte respective)

= Légende



Legend

- 1 Colombia Forest Products' plywood factory. Built in 1962 under the name Levesque Plywood by Yvon and Hervé Levesque, sold in 1995 to the Portland-based Columbia Forest Products company.
- 2 Tembec Inc.'s Hearst sawmill. Established in 1964 by René Fontaine, this mill operated under the names F. & J. Lumber (Fontaine and Joanis) until 1982 and United Sawmill Ltd. until 1990. The mill was then sold to Malette Inc. of Timmins, then to Tembec Inc. from Témiskamingue, QC, in 1994.
- 3 Lecours Lumber Co. Ltd. sawmill. Built in 1943 by Arthur Lecours, this mill operates under the names A. Lecours and Sons Co. Ltd. until 1963 and Lecours Lumber Co. Ltd. until the present day.
- 4 Fontaine Lumber sawmill at Lac Ste-Thérèse. Established in 1941, this mill is operational until 1955.
- 5 Sawmill installed by Noé and Zacharie Fontaine in 1934. This mill is moved to Fontaine's Landing a few years later.
- 6 Polar Lumber sawmill on Roger's Access Road, moved to this location from Fontaine's Landing by René Fontaine, in 1958.
- 7 Fontaine's Landing sawmill, moved from Mattice by Noé, Zacharie and the Fontaine family in around 1936. The mill operates until 1958 when it is moved north of Calstock and becomes Polar Lumber.
- 8 Carey Lake sawmill. Built by Arthur Lecours in 1939, sold to Ernest Gosselin later on. Moved to Stoddart Lake in the late 1940s by Gosselin Brothers (see location 14).
- 9 Angelina Lake sawmill. Built by Fred Lecours in 1942, operates until 1951.
- 10 Sawmill built by Fred Lecours in 1951. Becomes F. P. & J. Lecours Co. Ltd. in 1956 when the mill's management is conferred upon François, Paul and Jules Lecours. This mill is moved to Calstock in 1960 and is merged with A. Lecours and Sons Co. Ltd. in 1963 to create Lecours Lumber Co. Ltd. (see location 3).
- 11 Levesque's Kabina River sawmill. Bought by J. D. Levesque from Willie Létourneau in 1948, the mill operates until 1963.
- 12 Levesque sawmill in Ritchie Township. Established by J. D. Levesque in 1953, it operates until 1963.
- 13 Levesque Lumber sawmill in Hearst. Built by J. D. Levesque in 1963, run by his sons Réal, André, Rosaire and Ronald starting in the early 1970s. This sawmill is forced to close down in 1992 following financial difficulties.
- 14 Gosselin Brothers sawmill near Stoddart Lake. Moved there from Carey Lake in the late 1940s, this sawmill operates until the late 1950s.
- 15 Gosselin Brothers sawmill in Calstock, built in the late 1950s. Gosselin Brothers is incorporated in the mid-1960s under the name Gosselin Lumber. The mill operates until 1982 when it is sold to

Lecours Lumber Co. Ltd.

- 16 Newaygo Timber sawmill in Mead. Established in 1974, this sawmill operates until 1984 when various problems force it to shut down.
- 17 Henry Selin Forest Products sawmill at Nassau Lake. Built in 1948 by Henry Selin. The company is sold to Toronto's Helpert Lumber in 1967 following financial difficulties; the sawmill ceases to operate two years later.